

Instruction Manual

EN

Important:

- 1) Please read the user manual thoroughly before using the product for the first time.
- 2) Please keep the user manual well for a good after sale service.

Product: RGB LED Solar Table Lamp

Assembly

SPECIFICATIONS

Material: UV-resistant White PE plastic+Durable metal materials Rods

Charge: Solar charging+USB Charging

LED: RGB+ White LEDs

Solar Panel: 6W 1.2W

Battery: 3.7V 2000mAh Li-ion battery

USB cable: Input 5V

Waterproof: IP65

Use Ambient Temperature: -24 C 55 C

Charge time: DC USB Charge -around 4hours;

Solar charge -8 hours in bright summer,

more than 8 hours when cloudy or rain

Fully Charged Lighting Duration: 10 hour to 24 hours

depends on different brightness levels;

Remote control: Battery-CR2025 (3V),

Distance-4meter (13 feet) for RGB Light,

2.5 meter (8 feet) for Warm White Light.

Color: RGBW color changing and color fix.

Memory function: It can remember the last setting of the light, and the next time it is turned on automatically or manually, it will start with the last setting.

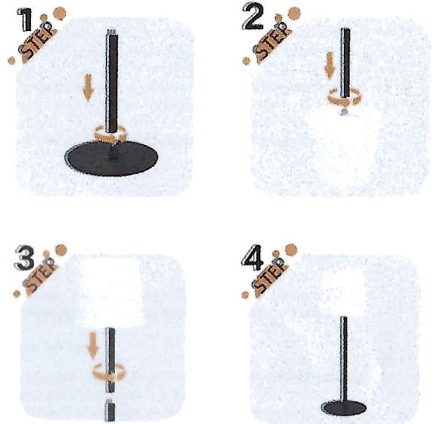
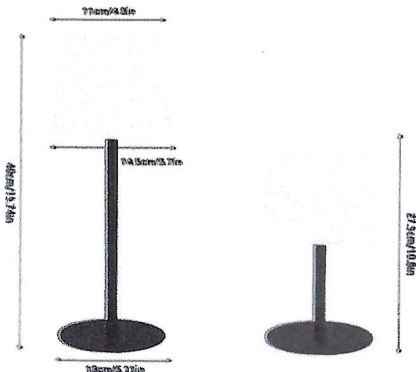
Items Supplied

1. Lamp shade x1
2. Base plate x1
3. Rods x2
4. USB cable x1
5. User manual x1

Check the items supplied for completeness and transport damage.

If you find any damage, do not use the lamp, but rather contact the customer service department.

Two Heights



Functions

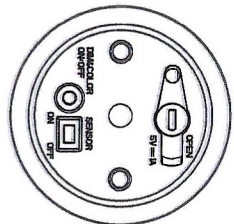
Switching On/Off: Hold down the ON/OFF+DIM&COLOR button for 3 seconds to switch the lamp on and off.

Dimming+Colors: To alter the luminosity, briefly press the ON/OFF + DIM&COLOR button several times. There are 3 dimming levels+RGB color gradually change mode +7 colors selections+Candle flickering effect mode.

Daylight Sensor : Slide the SENSOR ON/OFF switch to position ON if the daylight sensor is to be activated. The lamp then switches on automatically when it gets dark.

To deactivate the daylight sensor, slide the SENSOR ON/OFF switch to position OFF.

Note: The SENSOR ON/OFF switch has a waterproof cover, please touch the switch with your finger to see if it is in the ON or OFF position.



Instruction Manual

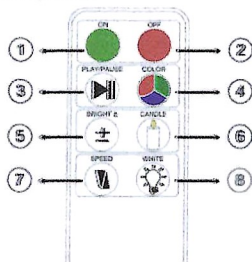
EN

Important:

- 1): Please read the user manual thoroughly before using the product for the first time.
- 2): Please keep the user manual well for a good after sale service.

REMOTE CONTROL

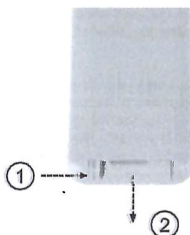
First remove the small plastic sheet from the battery cover before below operation.



- ① Turn on
- ② Turn off
- ③ PLAY means start the auto color change mode; PAUSE means stop the auto color change mode;
- ④ 7 colors change;
- ⑤ Adjust the brightness;
- ⑥ Candle flickering effect mode;
- ⑦ Adjust the speed of color change;
- ⑧ White Color

REPLACING REMOTE CONTROL BATTERIES:

- Removing the old battery by pressing the tab on the side of the battery cover and then sliding off the cover from the remote control.
- Take notice of the positive (+) and negative(-) direction of the battery. Make sure that the new battery (CR2025) is inserted the right way.
- Dispose of the old battery responsibly.



Use

The battery of the lamp has to be charged up so that the LEDs can light up. If the battery is empty, this takes approx 4 to 5 hours.

The battery can be charged both via the solar panel and with power from the plug socket, depending on whether the lamp is set up outdoors or indoors.

Outdoors

1. Set up the lamp in a location where the solar panel can absorb direct sunlight all day long if possible. Do not cover the solar panel!

2. Hold down the ON/OFF+DIM&COLOR button for a few seconds to switch on the lamp.

3. Slide the SENSOR ON/OFF switch to position ON to activate the daylight sensor. The battery charges up during daylight. When it gets dark, the LEDs automatically switch on. When it gets light, the LEDs switch off and the battery is charged up via the solar panel.

- To switch off the lamp manually, hold down the ON/OFF+DIM&COLOR button for a few seconds.
- To deactivate the daylight sensor, slide the SENSOR ON/OFF switch to position OFF.

Indoors

To ensure that the battery lasts for as long as possible, the lamp should not be switched on during charging. Disconnect it from the mains power after charging.

1. Remove the cover from the 5V socket on the lamp shade.
2. Plug the barrel connector on the cable which is also supplied into the 5V socket.
3. Plug the USB connector on the cable into your mains adapter (5V).
4. Connect the mains adapter to an easily accessible socket.

The charge control lamp next to the 5V socket lights up red while the battery is charging. Once the battery is full, it lights up green.



Charging, red light on



Fully charged, green light on

5. When the battery is charged, first pull the mains adapter out of the plug socket and then pull the barrel connector out of the 5V socket.
6. Place the cover on the 5V socket.
7. Switch on and operate the lamp in the manner described in the "Functions" chapter.

NOTE: The lamp lumen will be at/under 60lm automatically when by means of the USB cable. The lamp can only be adjusted again after disconnecting the charger.

Instruction Manual

EN

Important:

- 1):Please read the user manual thoroughly before using the product for the first time.
- 2):Please keep the user manual well for a good after sale service.

★ Why does the Daylight Sensor not work?

Please solve it through the following steps, if you need help, please contact our customer service staff!

1. Slide the SENSOR ON/OFF switch to position ON
2. Test the daylight sensor is to be activated.
① If the sunlight is too strong or the surrounding environment is too bright, please cover the solar panel with a hand or other objects, the daylight sensor cannot receive the light, and the light will turn on, as shown in the figure.



Turn off in the sunshine



Turn on in the dark

② If there is not enough light or the light is too dark, please use the flashlight or other strong light to illuminate the solar panel, the daylight sensor receives the light, and the light will turn off, as shown in the figure.



Turn on in the dark



Turn off in the sunshine

NOTE:

1. Slide the SENSOR ON/OFF switch to ON position, when the sunlight is too strong or the environment is too bright, the light cannot be turned on manually or automatically.
2. When the ambient light is very dark, the light will light up automatically. If you turn off the lamp manually, the next time the light will light up automatically, you need to wait until the next dark (or simulate the next dark, and the light will change from strong to dark).

⚠ WARNING – Danger of Injury

- Keep children and animals away from plastic bags and films. There is a danger of suffocation.
- Do not leave small children and animals unsupervised with the product. They could knock over the lamp and injure themselves.
- Make sure that the cable is always kept out of the reach of small children and animals. There is a danger of strangulation.
- Make sure that the connected cable does not present a trip hazard.

⚠ WARNING – Danger of Fire

- Do not use the product in rooms containing easily ignitable or explosive substances. Never operate the product in the vicinity of a gas source.
- Do not cover the product or the mains adapter during operation. Keep the mains adapter away from combustible materials.

Cleaning and Storage

- No liquid must be allowed to enter the product during cleaning. Never immerse the product in water!
- Do not use any corrosive or abrasive cleaning agents! Wipe down the product with a clean, slightly damp cloth. Use mild cleaning agent if necessary. Store the product in a dry, clean, frost-free place that is protected from direct sunlight and cannot be accessed by children or animals when it is not being used.

♥ TECHNICAL SUPPORT & WARRANTY

Hello, Thanks for your purchase !

Our products provide a 24-month warranty, if you are not satisfied our products and services during the warranty period, please feel free to contact us, our service team will solve your confusion for you, we will try our best to make you satisfied, your satisfaction is our highest pursuit!

Our products are undergoing a campaign to extend the warranty period by 12 months. You only need to contact our customer service, provide your order information, register the extended warranty, and you can get a 36-month product warranty. We look forward to your participation. We strive to provide excellent customer service and want to ensure your complete satisfaction.